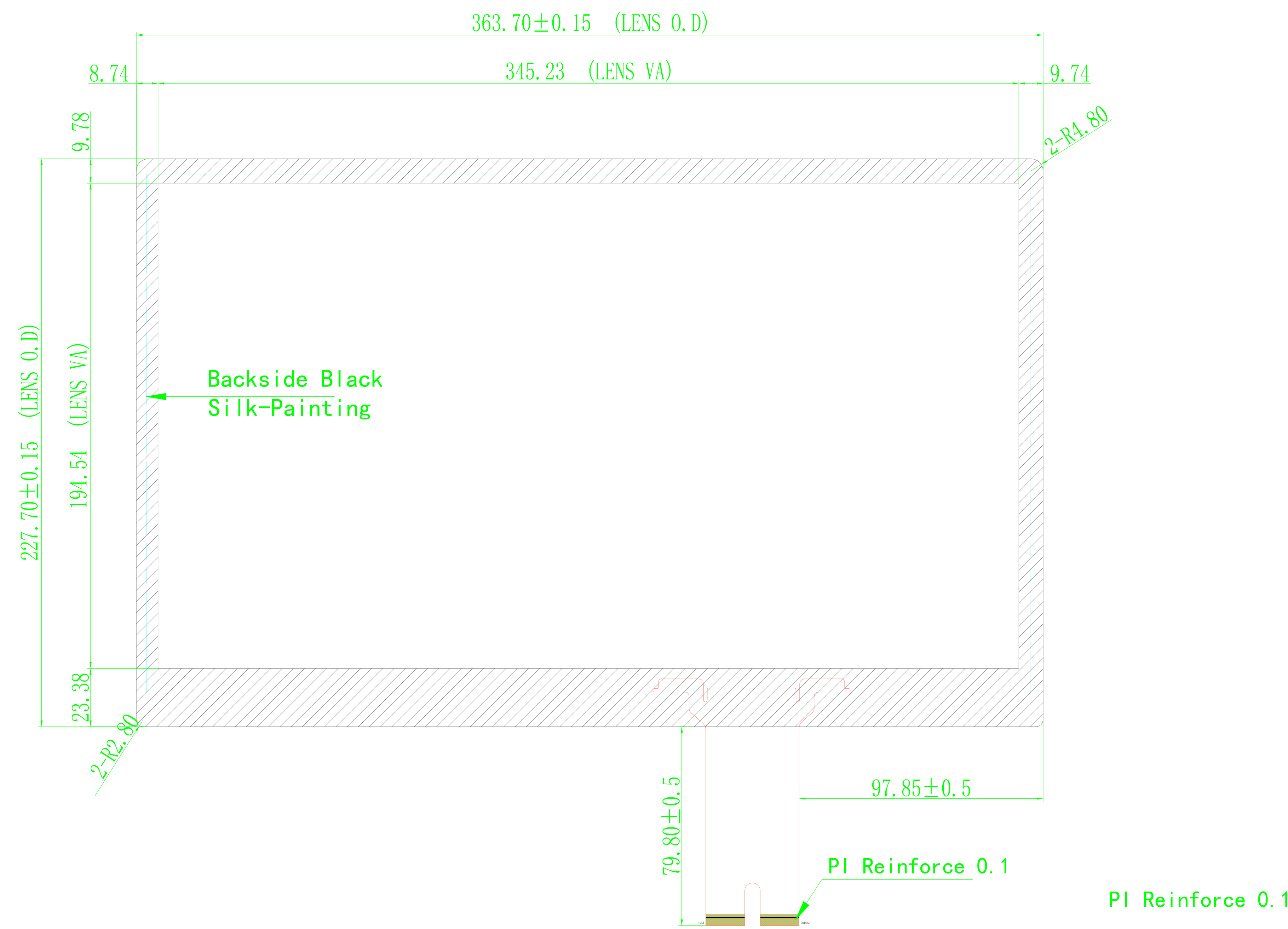
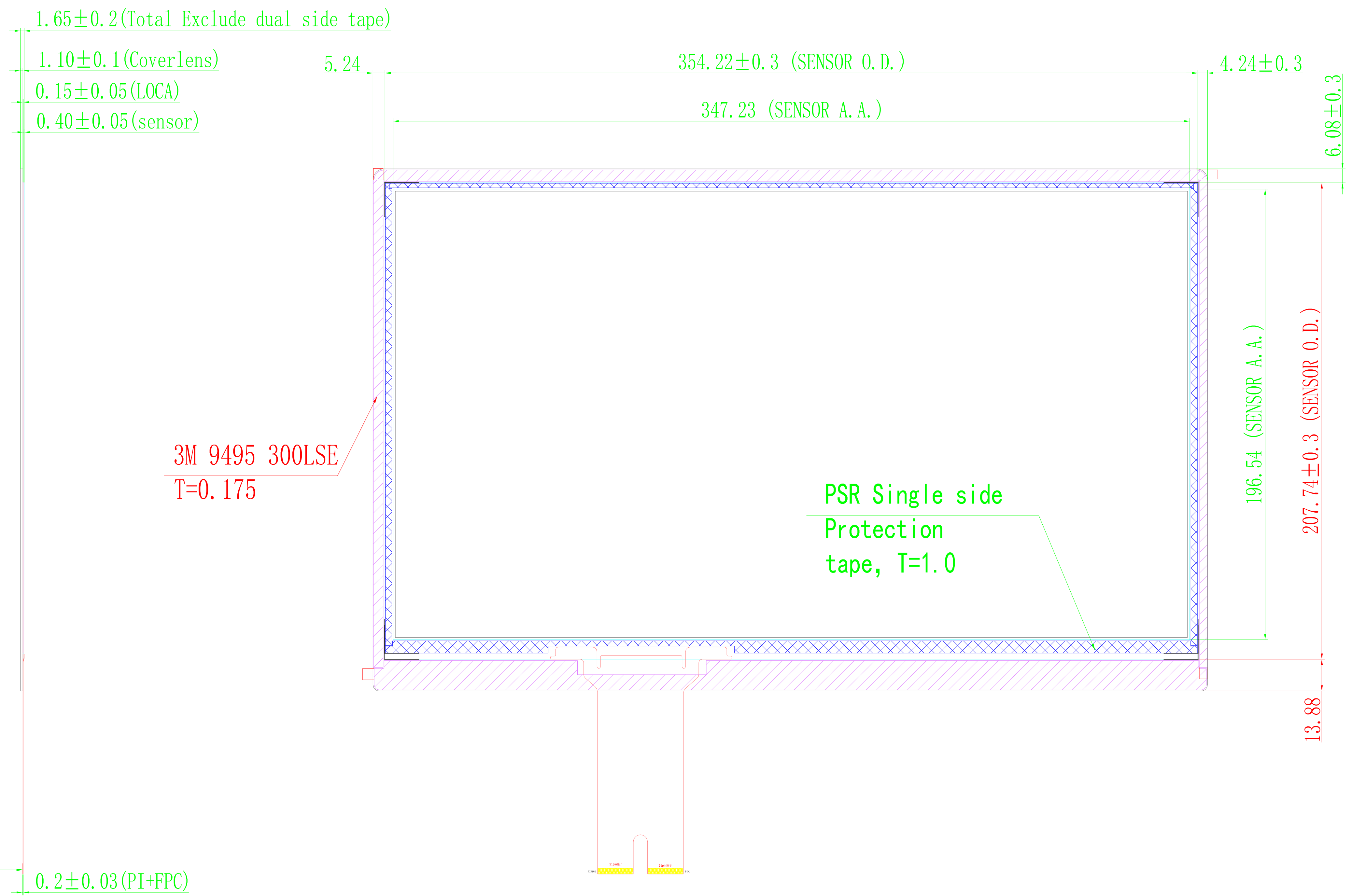


1	2	3	4	5	6
ver.	modify NO.	Details	Area	P. I. C	Date

FRONT VIEW



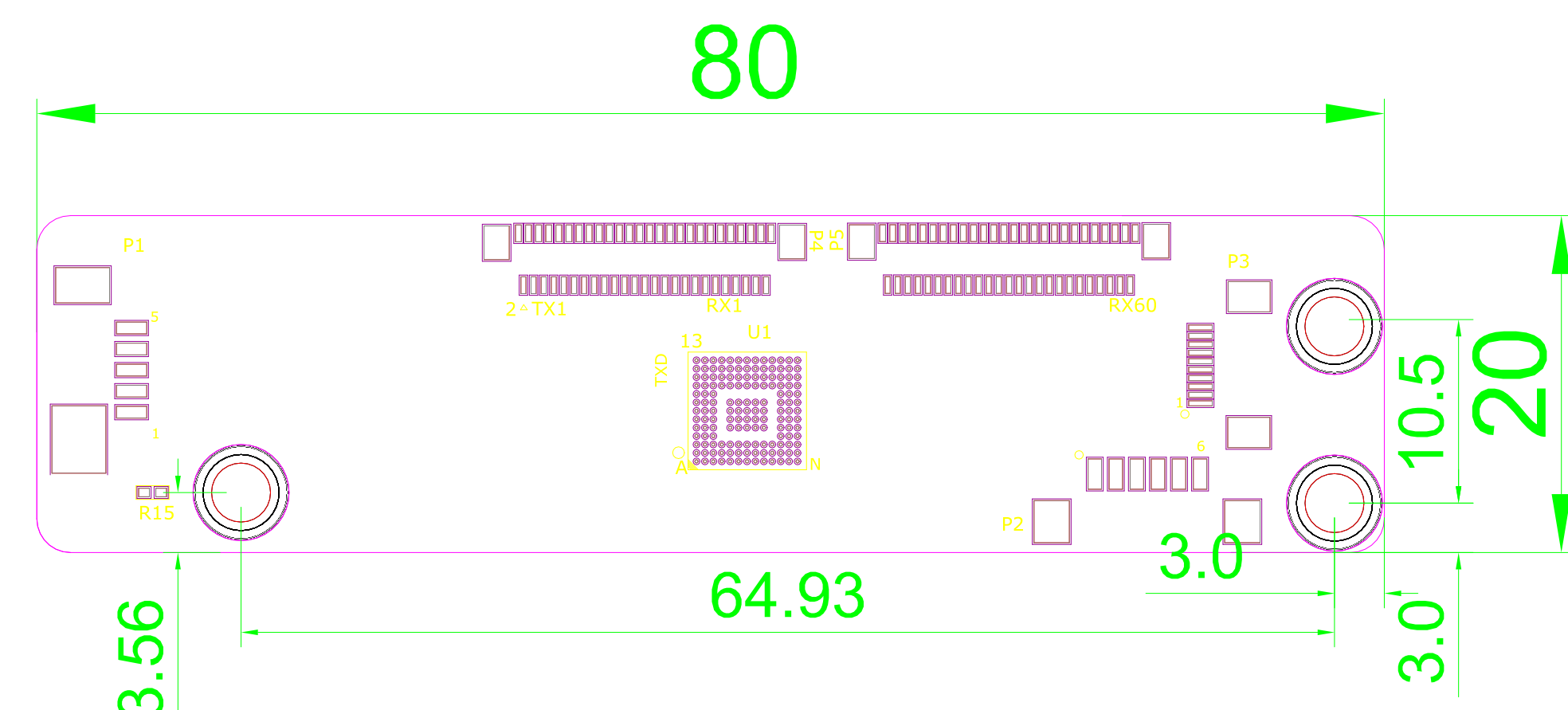
SIDE VIEW



BACK VIEW

Technical Datasheet:

1. Cover Glass: Tempered Glass
2. Structure: Glass+Glass
3. Controller IC: ILI2511
4. Surface Hardness: $\geq 6H$
5. Light Transmittance: $\geq 85\%$
6. Unmarked Tolerance: $\pm 0.3mm$
7. All materials used conform to RoHs standards



Scale (3:1)

ILITEK 2511 Controller

USB

PIN	Define
1	GND
2	GNDIN
3	D+
4	D-
5	VDD/5V

Designed by:	D032
Checked by:	T006
Approved by:	P012
Workmanship:	W002
Standardization:	S015
Released by:	M012

Part No.	SNT-ITO-TPB-15.6-ILI		
Product Name :	15.6inch ITO Touch Panel	Drawing No.	S200815i156
		Project Code.	i156S02
Business Unit:	SNT-BTP	Period Mark	A
		View Angle	30°
		Ratio	1:3
BOM Code	1.13.156.02.2010	Page 1	Total 1 Page
Product Series	BTP-ITO	思诺泰科创电子(苏州)有限公司 SINOTECHNICS INC.	